



## 1 - Contents of package

- MacR6 N
- 6 Torx T10 M12 screws
- 2 plastic tack rivets
- H-type silicone gel in syringe
- Watermeter adapter kit

## 2 - Necessary accessories

- Torx T10 screwdriver



- Smartphone or tablet with NFC support
- Data Loggers Configurator NFC application  
- QR code redirects to Google Play store



- MicroSIM card



## 3 - SIM card assembly and slot sealing

- Open the front cover (fig. 3.1).
- Open the SIM card cap, take out the SIM holder (fig. 3.2).
- Install the SIM card according to fig. 3.3. Insert the SIM holder into the slot.
- Using the syringe, seal the surface of the SIM holder (see figure 3.4 and 3.5), being sure to fill the small plastic moat surrounding the SIM card and holder.
- Put the SIM card cap back on, covering the SIM card.
- Put the front cover onto the device then close it with the included Torx screws.



Fig. 3.1.

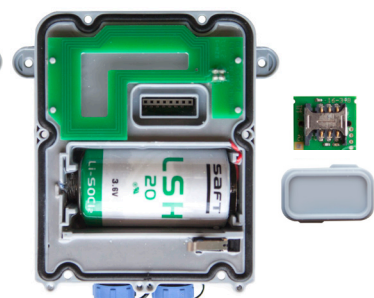


Fig. 3.2.

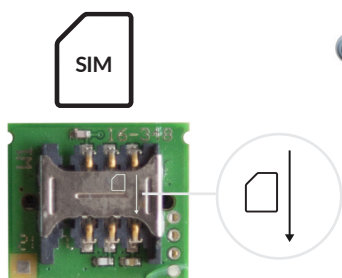


Fig. 3.3.

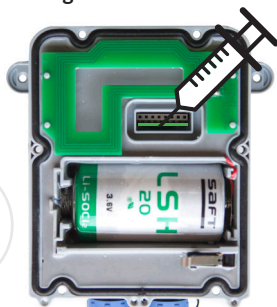


Fig. 3.4.

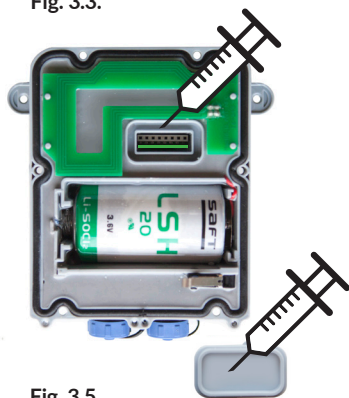


Fig. 3.5.

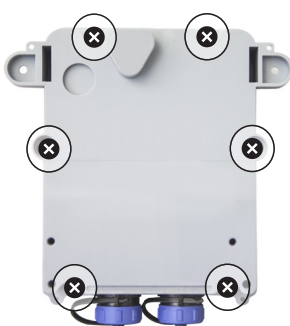


Fig. 3.6.

- Using the syringe, put the gel on the front of the head of coils, and spread it carefully on the whole surface using finger or soft tool - fig. 3.7 & 3.8.



Fig. 3.7

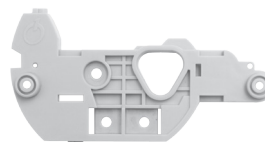


Fig. 3.8.

## 4 - Watermeter assembly

- Select the adapter dedicated for the watermeter.
- Install the adapter using the included screws.
- Install the MacR6 N on the adapter using tack rivets (fig. 4.3.).

### • ITRON



ITRON adapter is can be attached to a pipe using cable ties (fig. 4.1) or to the wall using pegs (fig. 4.2).

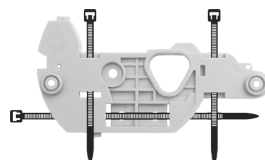


Fig. 4.1.

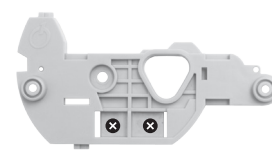
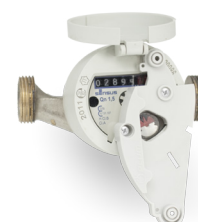


Fig. 4.2.

### • MADDALENA



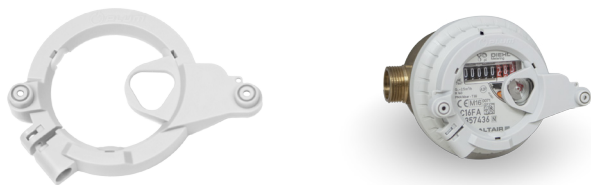
### • SENSUS



### • ZENNER



• DIEHL



INSTALLATION

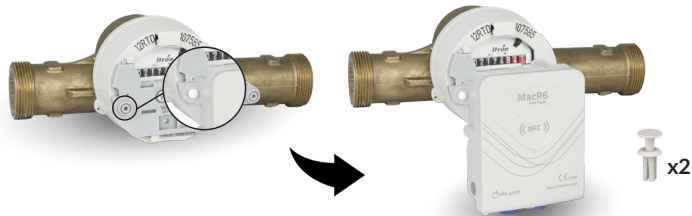


Fig. 4.3.

• 5 - Connection with MacR6 N

1. Turn on the NFC on smartphone or tablet.
2. Put the phone or tablet on the front of the MacR6 N. The application should start automatically.

There is no specific position for phone placement. It depends on location of NFC antenna inside the smartphone.



• 6 - Configuration of parameters

1. Take the smartphone or tablet off of the MacR6 N after the readout has been generated.
2. Enter data into the watermeter- pulse factor, counter value, serial number. Enter the PIN to the SIM card. By clicking "More parameters" you are able to set advanced values such as registration period, data server address, or installation phone number ( fig. 6.1. & 6.2.).

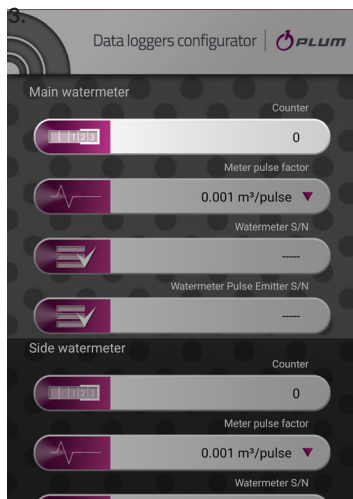


Fig. 6.1.

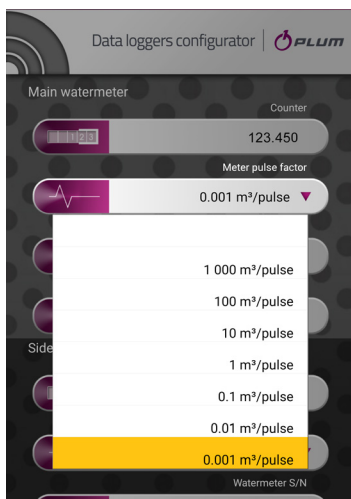
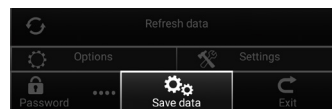
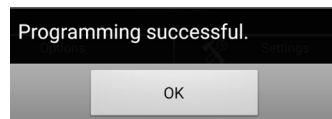


Fig. 6.2.

3. Save the configuration using the Save data button as presented below.



4. Successful saving will be indicated by the message below.



Now the callibration process will begin. Water must be flowing for calibration to occur.

When calibration is successful, MacR6 N will send an SMS with a summary of the installation to the same smartphone or tablet used for programming.



If the callibration is unsuccessful, please repeat all steps in part 6 - Configuration parameters

DEVICE IS CONFIGURED AND READY TO USE

• 7 - eWebtel.com

1. Choose the GSM TEST option, and then choose DP and ZD sending.
2. Put the smartphone or tablet close to the MacR6 N and wait for confirmation.

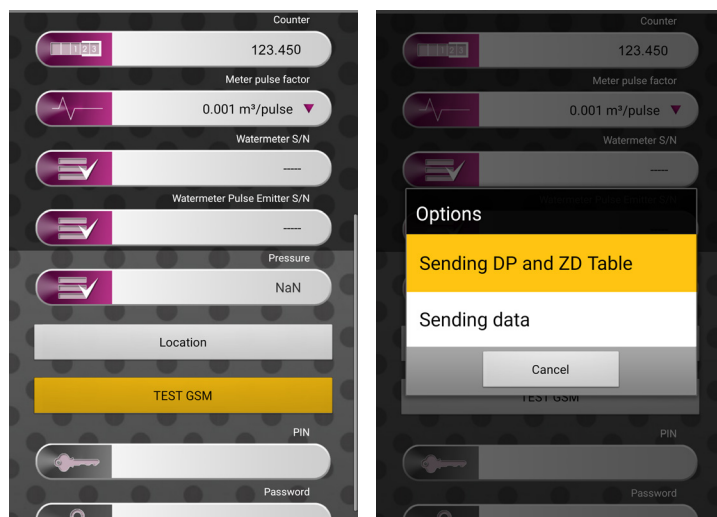


Fig. 7.1.

**PLUM Sp. z o.o.**  
Wspólna 19, Ignatki, 16-001 Kleosin, Poland

Technical Department  
tel.: 85 749 70 08, fax.: 85 749 70 14, e-mail: serwis@plum.pl